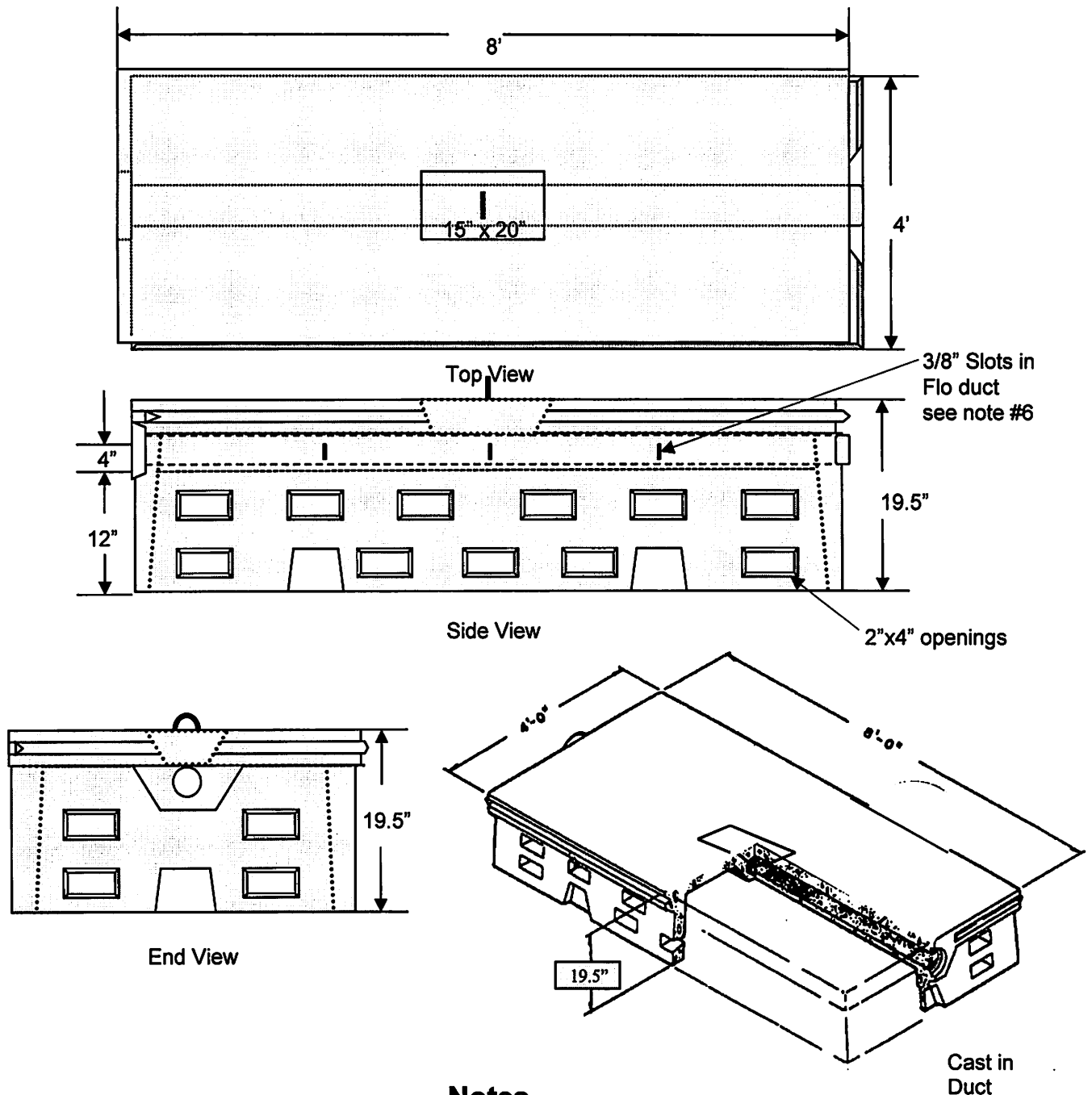


William N. Lamarre Concrete Products, Inc.

"L" FLO-DUC DISSIPATOR

HD Top Loading Only
(Drawings Not to Scale)



Notes

1. Concrete strength f'c 4000PSI@28 days. Density 150 PCF.
2. Cement, Portland Type II or III, ASTM C150-81
3. Admixtures, air & plasticizers per ASTM C233-82
4. Reinforcement per ASTM C1227-latest revision
5. Conforms to Mass Title V specifications
6. 6 - 3/8" Slots in Flo Duct - 2 located 2' in from each side & 2 in center

P.O. Box #333, 87 Adams Hill Rd, Greenville, NH 03048

603-878-1340 MA 800-937-3435 NH 800-878-0514 Fax: 603 878-3349