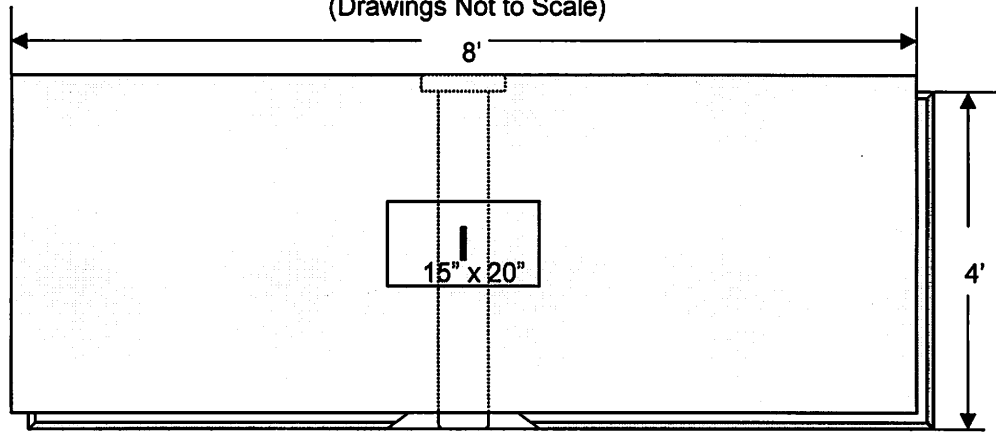


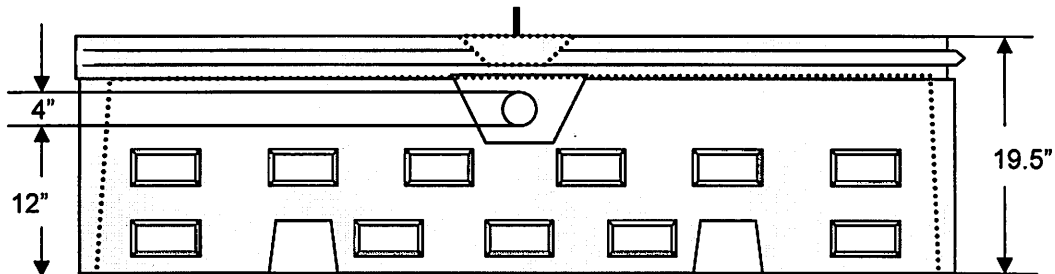
# William N. Lamarre Concrete Products, Inc.

## "S" FLO-DUC DISSIPATOR

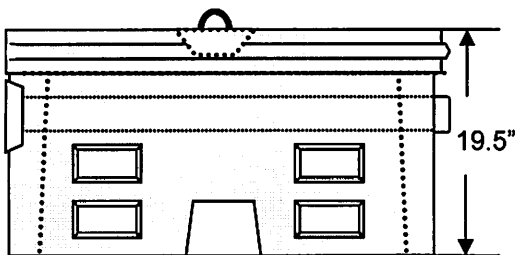
HD Top Loading Only  
(Drawings Not to Scale)



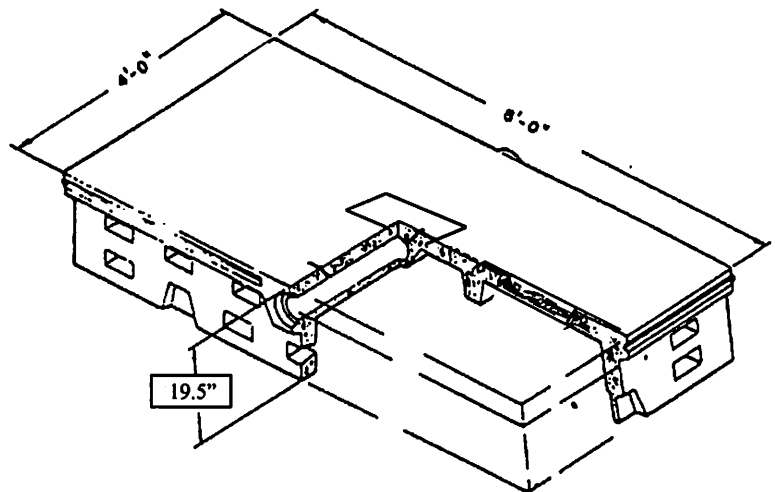
Top View



Side View



End View - Cross Section



### Notes

1. Concrete strength  $f'_c$  4000PSI@28 days. Density 150 PCF.
2. Cement, Portland Type II or III, ASTM C150-81
3. Admixtures, air & plasticizers per ASTM C233-82
4. Reinforcement per ASTM C1227-latest revision
5. Conforms to Mass Title V specifications