

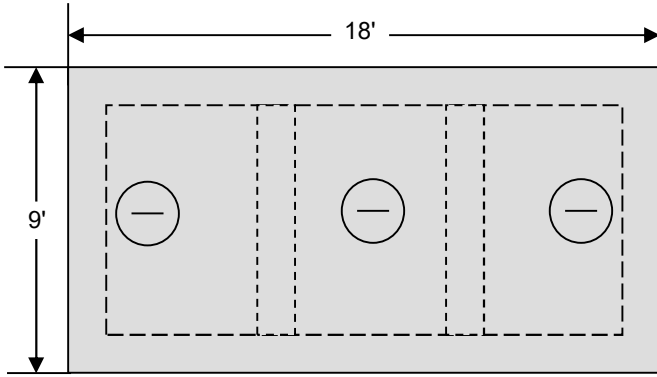
# William N. Lamarre Concrete Products, Inc.

## H2O COMMERCIAL PRECAST TANK 2-COMP.

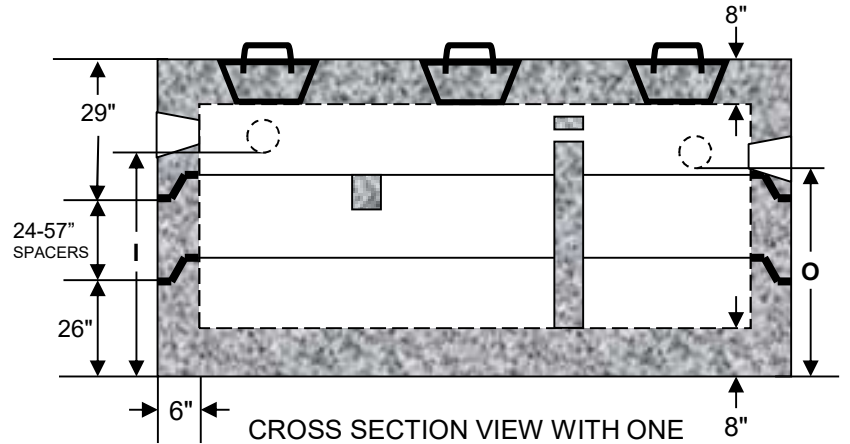
### 4,000 – 11,000 Gallon Capacity

Drawing Not to Scale

NEW MOLD  
 2024  
 Inlet/Outlet  
 Updated 1/2025



TOP VIEW-TOP  
3 CLEANOUTS - 26" DIAMETER



CROSS SECTION VIEW WITH ONE  
SPACER CROSSMEMBERS-risers only

<b>Critical Tank Dimensions</b>				
Liquid Capacity	Inlet / Outlet	Height	Septic Capacity	Holding Capacity
4000	62"/59"	79"	4322	5339
4500	68"/65"	85"	4822	5839
5000	71"/68"	91"	5339	6356
5500	78"/75"	97"	5839	6856
6000	84"/81"	103"	6356	7373
6500	90"/87"	109"	6856	7873
7000	96"/93"	115"	7373	8390
7500	102"/99"	121"	7873	8890
8000	108"/105"	127"	8390	9407
8500	114"/111"	133"	8890	9907
9000	117"/114"	136"	9153	10,170
9500	123"/120"	142"	9653	10,670
10000	129"/126"	148"	10,170	11,187
11000	141"/138"	160"	11,187	12,204

**Notes**

1. Also available as a 2 compartment tank. (Placement varies as needed-shown 1/3-2/3)
2. Concrete strength f'c 5000PSI@28 days. Density 150 PCF.
3. Cement, Portland Type II or III, ASTM C150-81
4. Admixtures, air & plasticizers per ASTM C233-82
5. Reinforcement per ASTM C1227-latest revision
6. Design Loading AASHTO HS20-40
7. Constructions joints sealed with butyl rubber
8. Design conforms to 310 CMR 15.00, Mass Title V regs. for septic tanks