

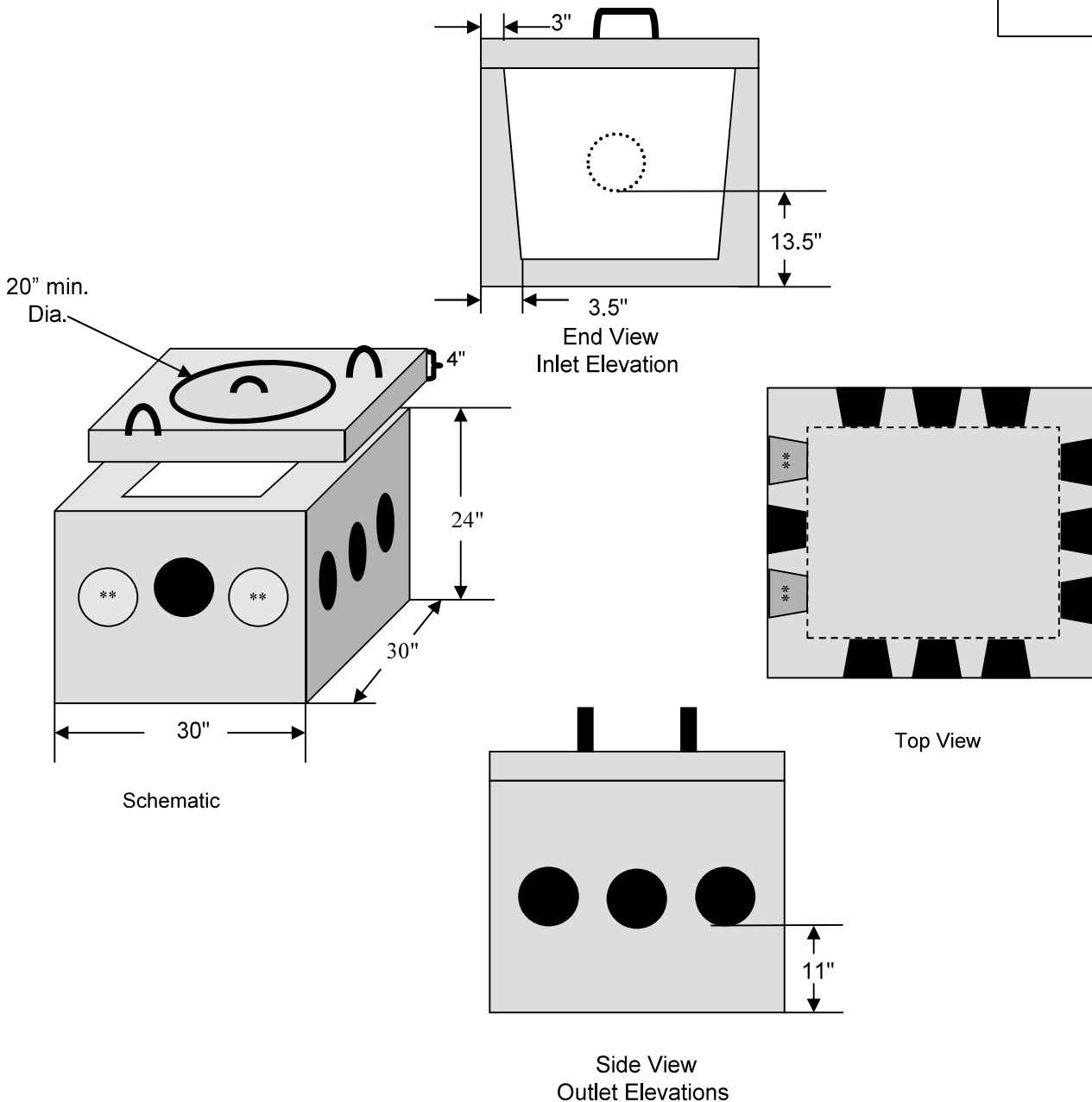
William N. Lamarre Concrete Products, Inc. 9 or 11 OUTLET H2O DISTRIBUTION BOX

LINCOLN

(**2 Additional Outlets on Inlet Side w/9 Outlet)

Drawing Not to Scale

RISER AVAILABLE:
20" high



**For Additional Information See:
Informational Sheet On All Distribution Boxes**

87 Adams Hill Road, PO Box #333 Greenville, NH 03048
603-878-1340