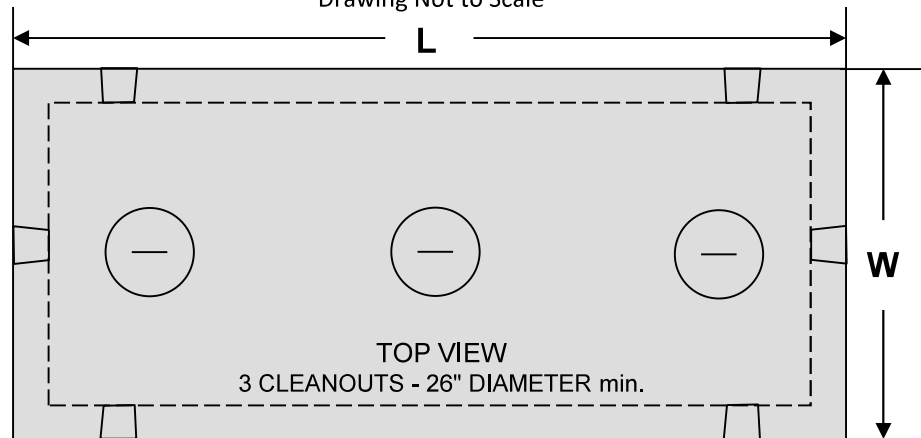


# William N. Lamarre Concrete Products, Inc.

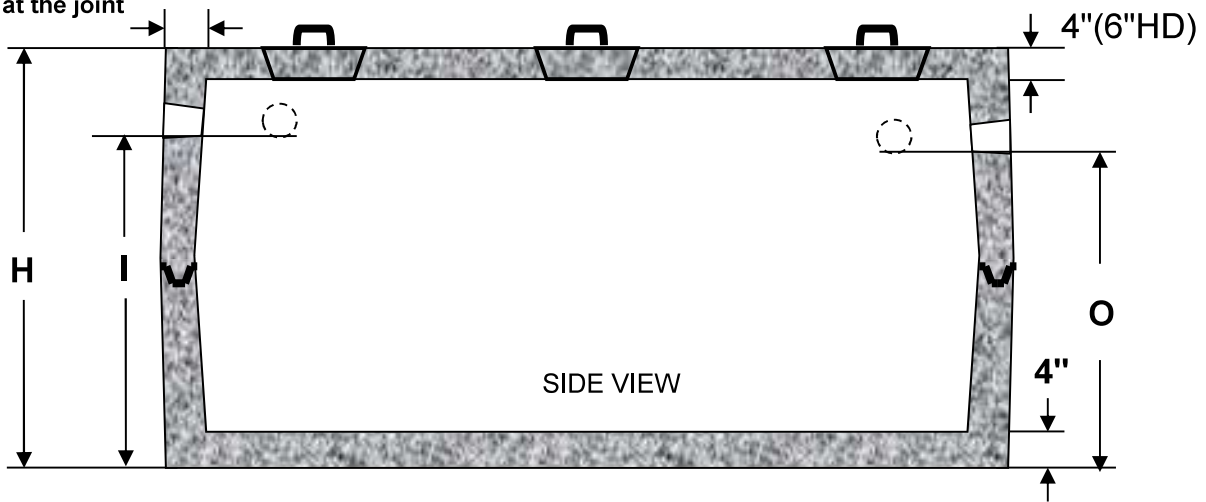
## RESIDENTIAL PRECAST SEPTIC TANKS

### H10 & HD Top Loading

Drawing Not to Scale



Wall taper  
4" to 3" at the joint



<b>Critical Tank Dimensions</b>				
Liquid Capacity	Inlet / Outlet	Height H10 (HD)	L x W	Excavation Size
1000	56" / 53"	68" (70")	8'6" x 4'10"	11' x 6'
1250	55" / 52"	68" (70")	10' x 5'	12' x 7'
1500	56" / 53"	68" (70")	10'6" x 5'6"	12' x 7'
2000	56" / 53"	67½" (69½")	12' x 6'6"	13' x 8'
2500	71" / 68"	82½" (84½")	12' x 6'6"	13' x 8'
3000	86" / 83"	97½" (99½")	12' x 6'6"	13' x 8'

**Notes**

1. Concrete strength f'c 4000PSI@28 days. Density 150 PCF.
2. Cement, Portland Type II or III, ASTM C150-81
3. Admixtures, air & plasticizers per ASTM C233-82
4. Reinforcement per ASTM C1227-latest revision
5. Heavy duty top loading available – add 2" to height
6. Construction joints sealed with butyl rubber
7. Design conforms to 310 CMR 15.00, Mass Title V regs. for septic tanks