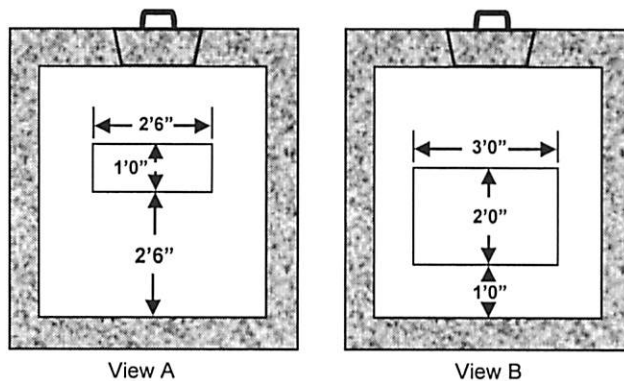
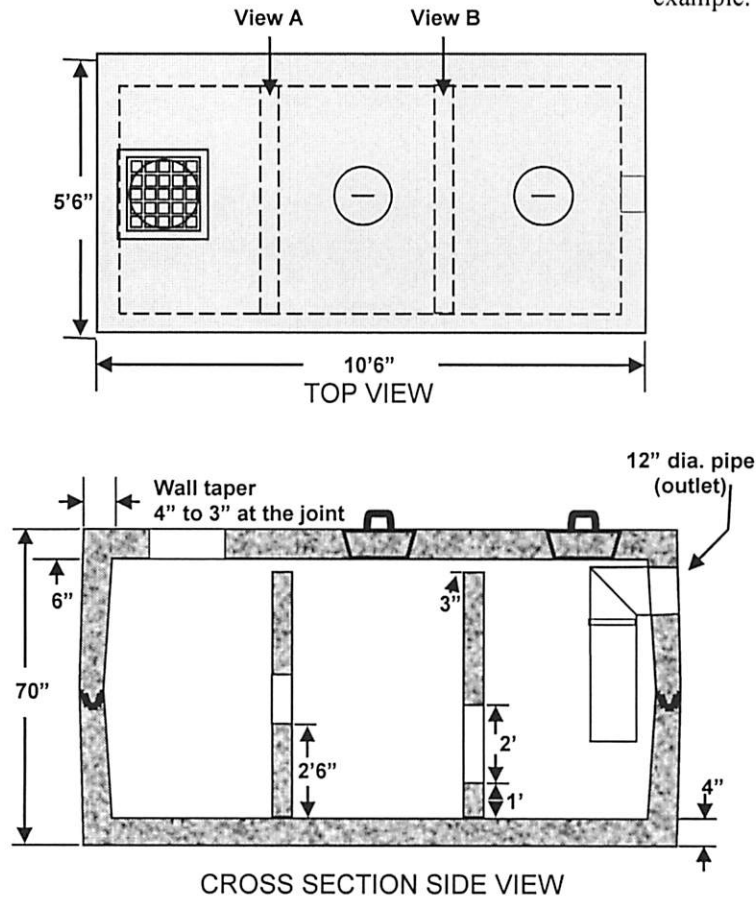


William N. Lamarre Concrete Products, Inc.

HD TOP LOADING 1500 WQT

(Drawings Not to Scale)

Item is made to order – this is an example. Holes & pipe may vary.



Notes

1. Concrete strength f_c 4000PSI@28 days. Density 150 PCF.
2. Cement, Portland Type II or III, ASTM C150-81
3. Admixtures, air & plasticizers per ASTM C233-82
4. Reinforcement per ASTM C1227-latest revision
5. Heavy-duty top loading available – add 2" to height
6. Construction joints sealed with butyl rubber
7. Design conforms to 310 CMR 15.00, Mass Title V regs. for septic tanks