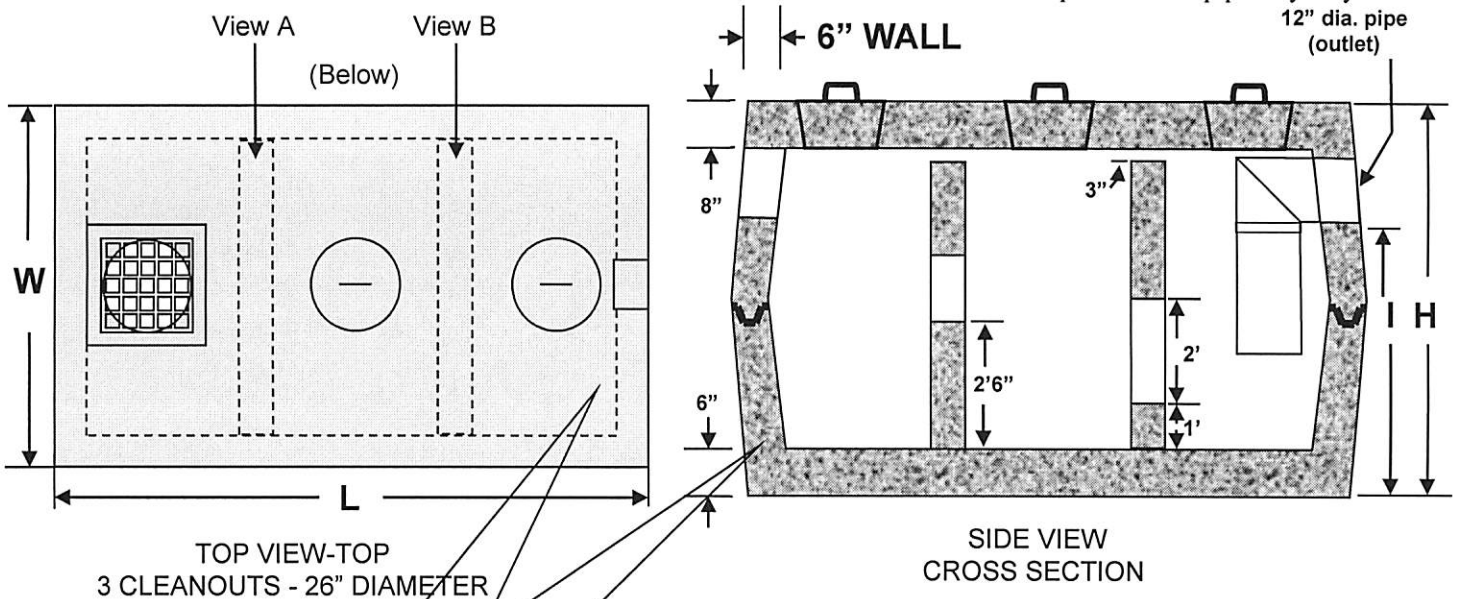


William N. Lamarre Concrete Products, Inc.

H2O COMMERCIAL 1500 WQT

(Drawings Not to Scale)

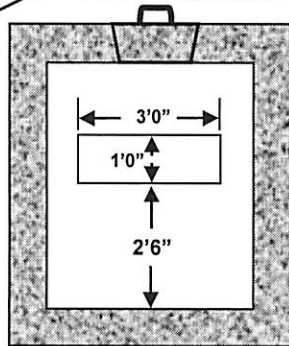
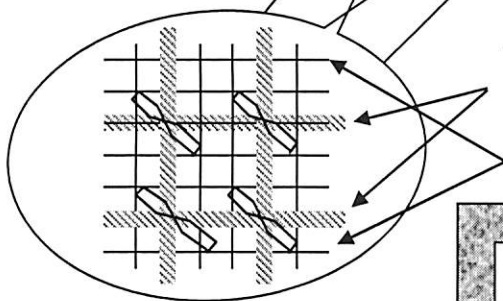
Item is made to order – this is an example. Holes & pipe may vary.



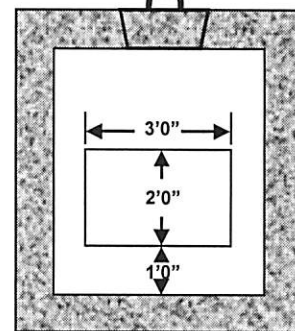
Detail of Reinforcement

1/2" grade 60 rebar tied in a 8" x 8" grid, top and bottom, 1/2 grade 60 rebar loops around sides every 8" inches

4" x 4" #4 wire fabric, top sides and bottom or equivalent



View A



View B

| Critical Tank Dimensions | | | | |
|--------------------------|------------------|-----------|----------------------|-----------------|
| Liquid Capacity | Inlet/Outlet I/O | Height(H) | Length x Width L x W | Excavation Size |
| 1500 | varies | 73" | 11' x 6'2" | 13' x 8' |

Notes

- Concrete strength f'_c 5000PSI@28 days. Density 150 PCF.
- Cement, Portland Type II or III, ASTM C150-81
- Admixtures, air & plasticizers per ASTM C233-82
- Reinforcement per ASTM C1227-latest revision
- Design Loading AASHTO HS20-40
- Constructions joints sealed with butyl rubber
- Design conforms to 310 CMR 15.00, Mass Title V regs. for septic tanks

P.O. Box #333, 87 Adams Hill Rd, Greenville, NH 03048
603-878-1340 MA 800-937-3435 NH 800-878-0514 Fax: 603 878-3349