

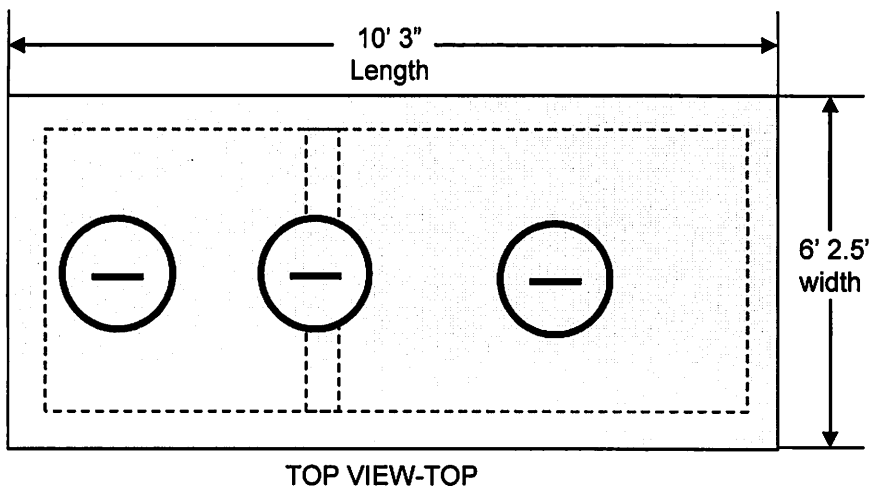
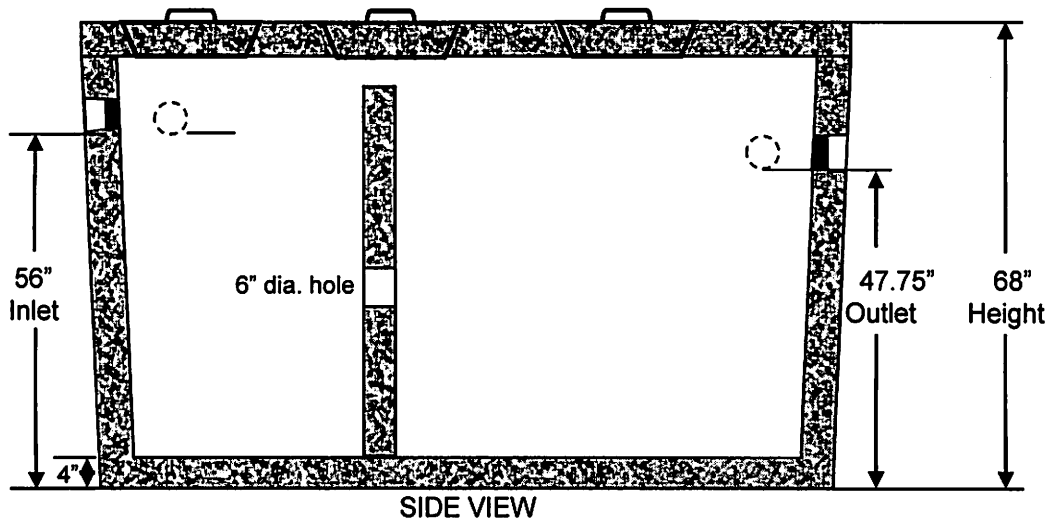
William N. Lamarre Concrete Products, Inc.

1000/500 MONOLITHIC .5 FAST TANK UNIT

Internal Mount

(Drawings Not to Scale)

Updated 10/08



2 CLEANOUTS - 26" DIAMETER
1 - opening for Fast Tank System

Critical Tank Dimensions				
Liquid Capacity	Inlet/Outlet	Height Add 2" for HD	L x W	Excavation Size
1000/500	56" / 47 3/4"	68"	10' 3" x 6' 2 1/2"	12' x 8'

Notes

1. Special purpose Mono Tank – adapted for FAST .5 System.
2. Concrete strength f'c 4000PSI@28 days. Density 150 PCF.
3. Cement, Portland Type II or III, ASTM C150-81
4. Admixtures, air & plasticizers per ASTM C233-82
5. Reinforcement per ASTM C1227-latest revision
6. Heavy-duty top loading available – add 2" to height
7. Construction joints sealed with butyl rubber
8. Design conforms to 310 CMR 15.00, Mass Title V regs. for septic tanks

P.O. Box #333, 87 Adams Hill Rd, Greenville, NH 03048

603-878-1340 MA 800-937-3435 NH 800-878-0514 Fax: 603 878-3349