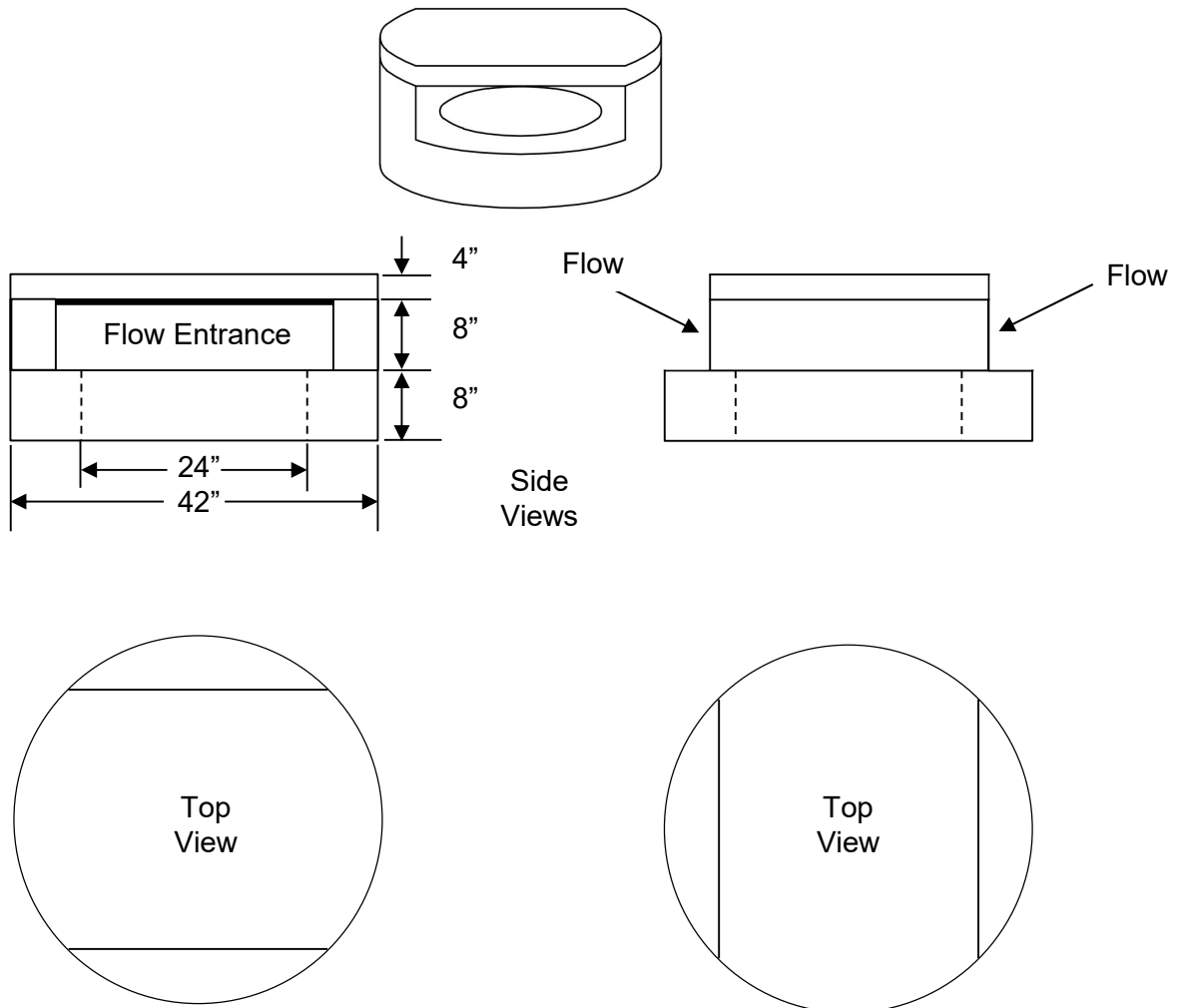


William N. Lamarre Concrete Products, Inc.

Curb Inlet – Top - NH Type C

Can be placed on assorted Manhole Diameters

(Drawings Not to Scale)



Notes

1. Holes cored to your plans/specifications.
Drawings or plans must be submitted prior to any coring.
2. Concrete strength f'c 4000PSI@28 days. Density 150 PCF.
3. Cement, Portland Type II or III, ASTM C150-81
4. Fiber, Admixtures, air & plasticizers per ASTM C233-82
5. Design Loading AASHTO HS20-44; ASTM C478
6. Butyl resin joint seal conforms to latest ASTM C913 & C443 specs