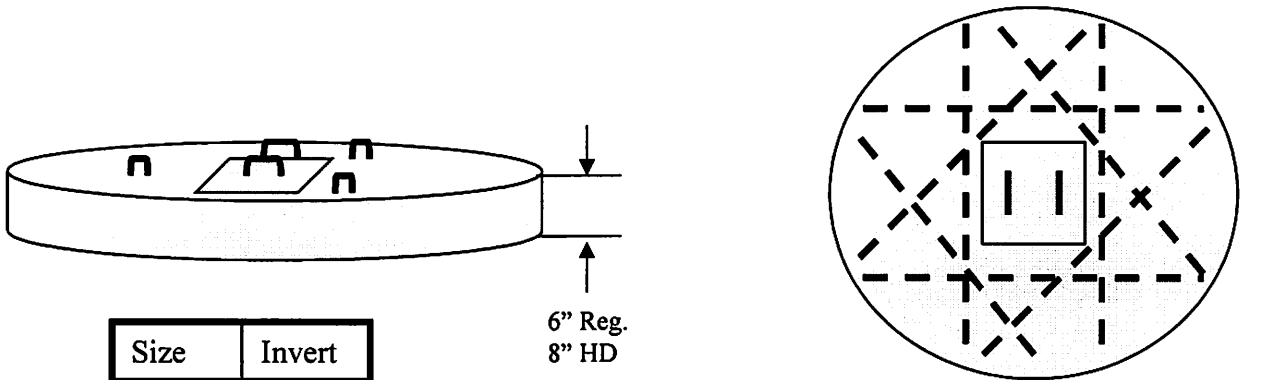


William N. Lamarre Concrete Products, Inc.

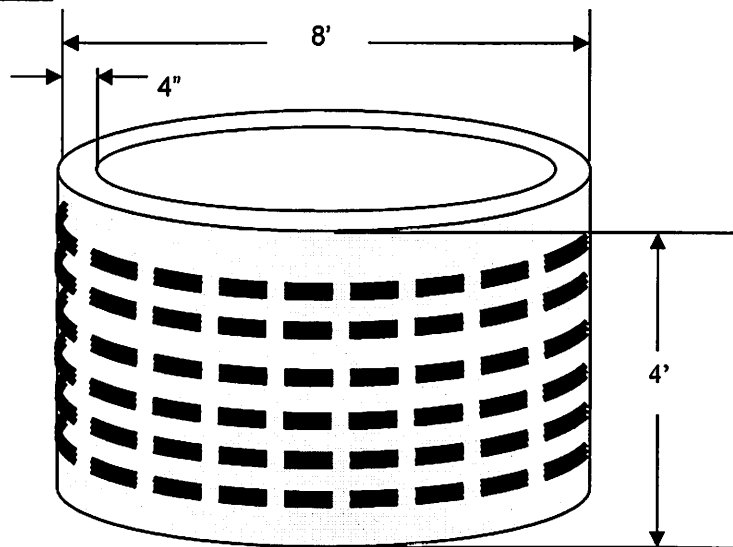
8' DIAMETER DRYWELL

Reg. or HD Top Loading
(Drawings Not to Scale)



Size	Invert
8'x4' as shown	40"
8'x8'	88"

21"x21" Cleanout min.
Reg. - 4@ 7' lengths of 1/2" rebar
HD - 8@ 7' lengths of 1/2" rebar



Schematic

Notes

1. Concrete strength f_c 4000PSI@28 days. Density 150 PCF.
2. Cement, Portland Type II or III, ASTM C150-81
3. Admixtures, air & plasticizers per ASTM C233-82
4. Reinforcement per ASTM C1227-latest revision
5. Heavy-duty is 2" higher due to increased top thickness - 6" TOP.