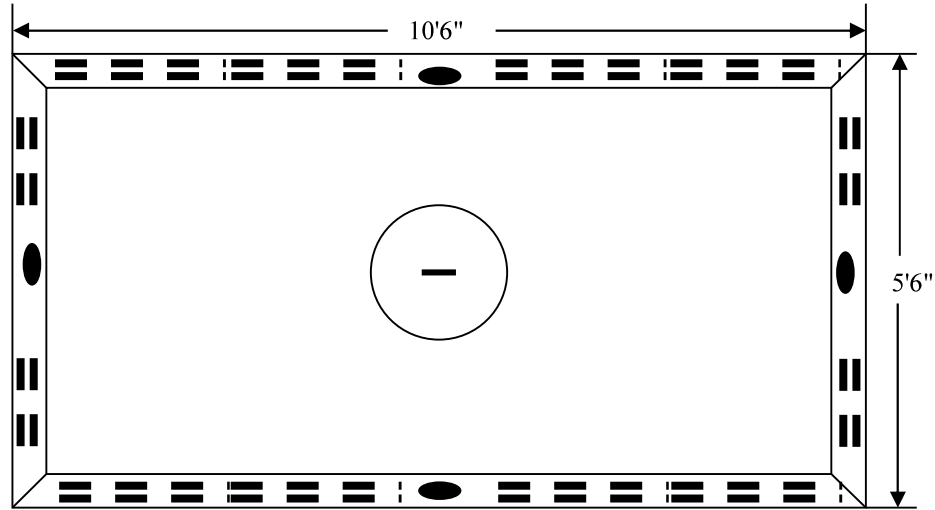


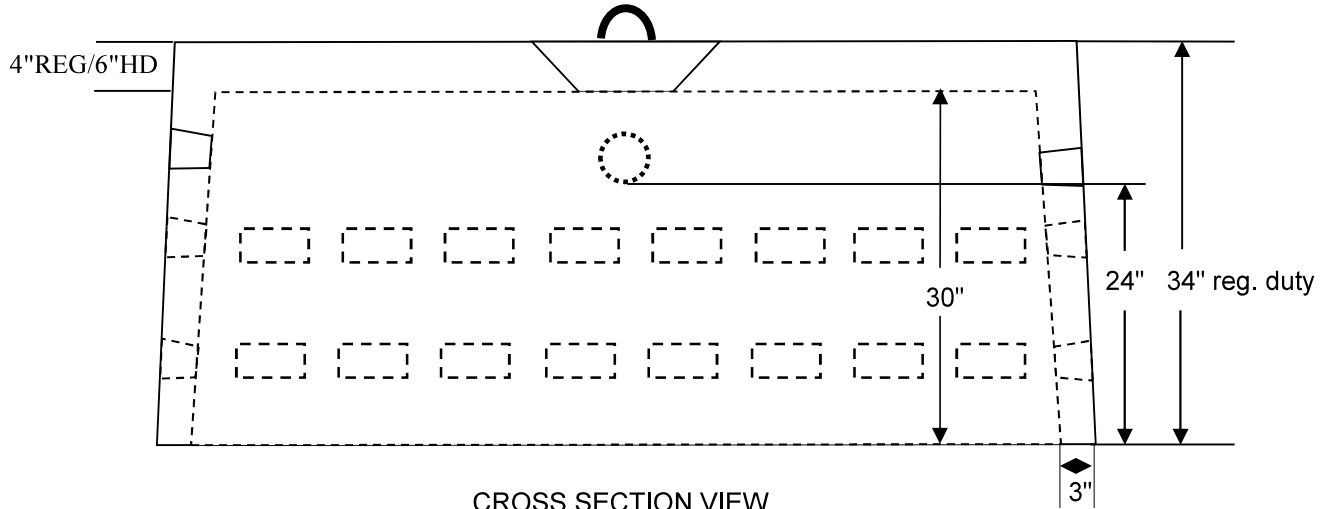
William N. Lamarre Concrete Products, Inc.

JUMBO RECTANGULAR DRYWELL

750 Gallons
 Available H10 & HD Top Loading
 Drawing Not to Scale



TOP VIEW-TOP
 1 CLEANOUT - 24" DIAMETER



CROSS SECTION VIEW

Notes

1. Concrete strength $f'c$ 4000PSI@28 days. Density 150 PCF.
2. Cement, Portland Type II or III, ASTM C150-81
3. Admixtures, air & plasticizers per ASTM C233-82
4. Heavy-duty is 2" higher due to increased top thickness - 6" TOP.