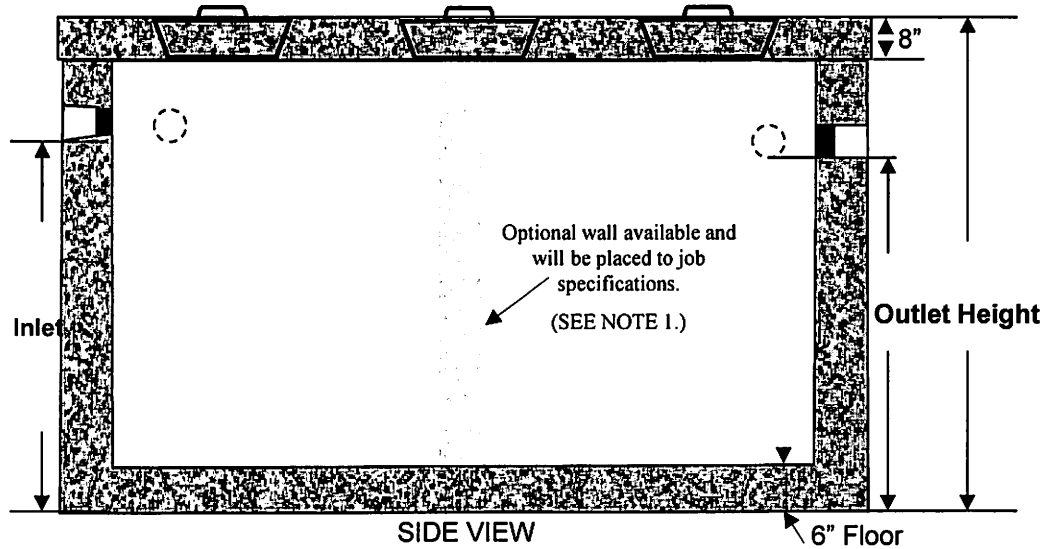
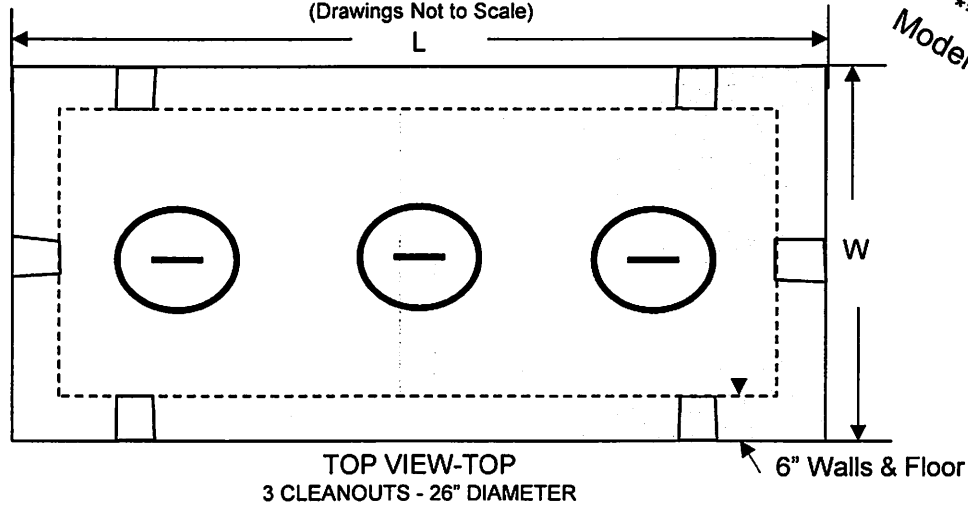


William N. Lamarre Concrete Products, Inc. H2O MONOLITHIC TANKS –COMMERCIAL

Shown with Optional Wall
(Drawings Not to Scale)

2000 gal
Model change 2015



Critical Tank Dimensions				
Liquid Capacity	Inlet/Outlet	Height	L x W	Excavation Size
1000	58"/56"	76"	9' 4" x 5' 4"	11' 4" x 7' 4"
1500	58"/56"	76"	11' x 6'	13' x 8"
2000	58"/55"	74½ "	12' 9½" x 6' 11½"	14' x 11'

Notes

1. Special purpose Mono Tanks also available including FAST tanks & 2-Compartment tanks (wall placement & cleanout to be determined by job specs.)(*Cleanout cover placement varies.)
2. Concrete strength f'c 5000PSI@28 days. Density 150 PCF.
3. Cement, Portland Type II or III, ASTM C150-81
4. Admixtures, air & plasticizers per ASTM C233-82
5. Reinforcement per ASTM C1227-latest revision
6. Design Loading AASHTO HS20-40
7. Constructions joints sealed with butyl rubber
8. Design conforms to 310 CMR 15.00, Mass Title V regs. for septic tanks

P.O. Box #333, 87 Adams Hill Rd, Greenville, NH 03048
603-878-1340 MA 800-937-3435 NH 800-878-0514 Fax: 603 878-3349