

William N. Lamarre Concrete Products, Inc.

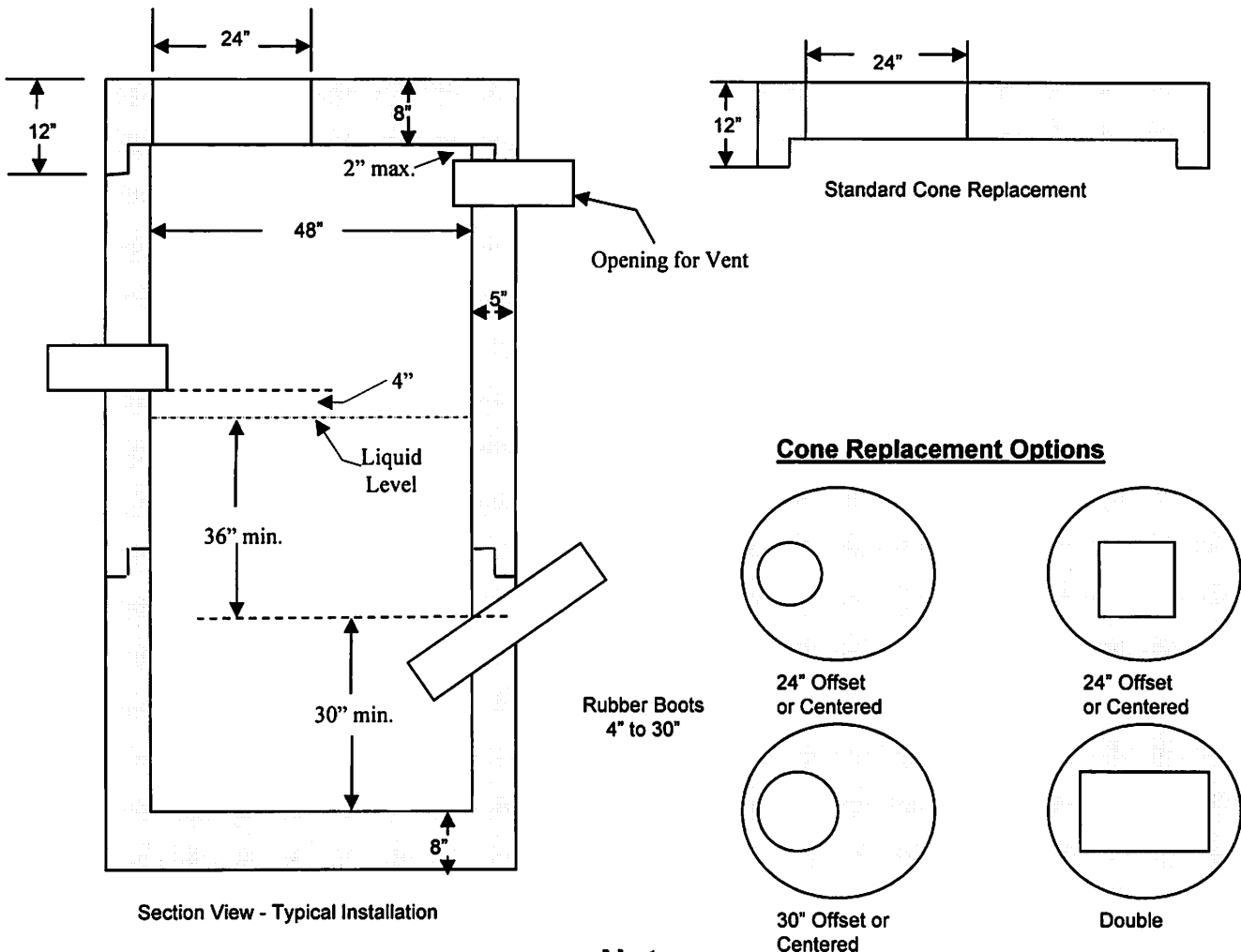
MDC GAS TRAP

4' inside diameter, 5" walls

H2O

Liquid Line to Top Measurement Varies

(Drawings Not to Scale)



Notes

1. Holes cored to your plans/specifications. Drawings or plans must be submitted prior to any coring.
2. Concrete strength f'c 4000PSI@28 days. Density 150 PCF. 5000PSI available.
3. Cement, Portland Type II or III, ASTM C150-81
4. Fiber, Admixtures, air & plasticizers per ASTM C233-82
5. Design Loading AASHTO HS20-44; ASTM C478 specs for precast reinforced concrete manhole sections
6. Butyl resin joint seal conforms to latest ASTM C913 & C443 specs
7. Optional steel reinforced plastic steps meet ASTM C478 specs - available