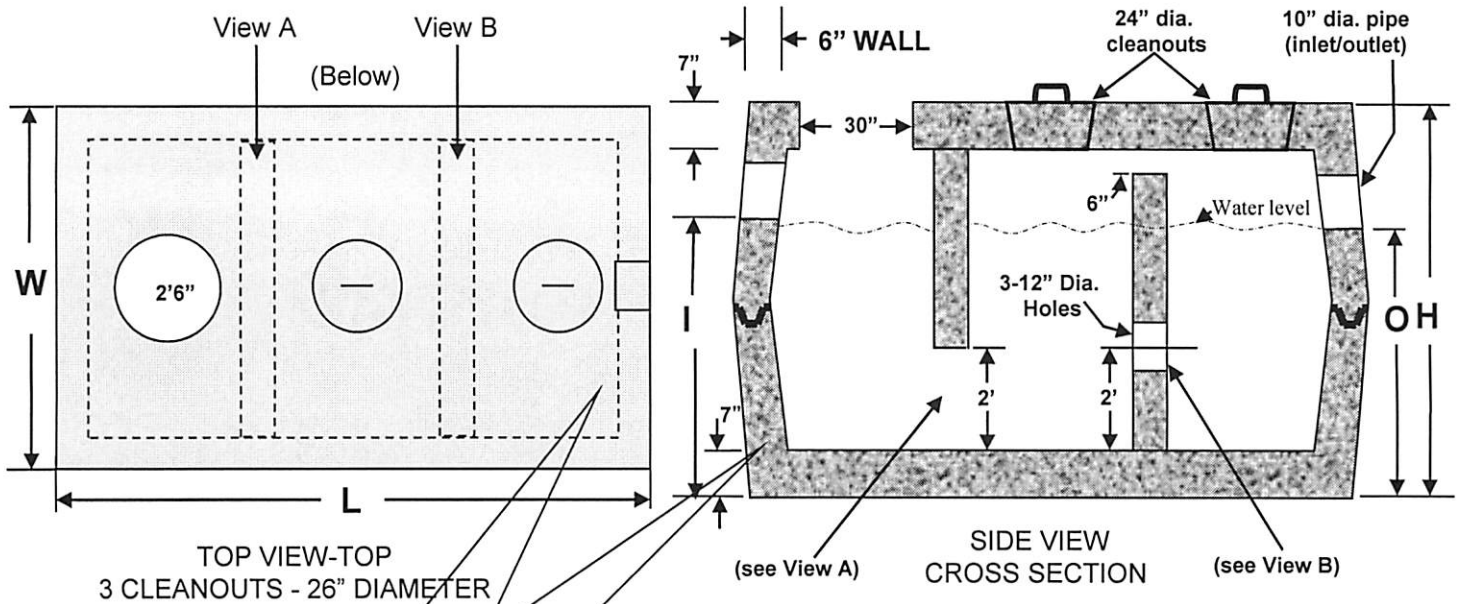


# William N. Lamarre Concrete Products, Inc.

## H2O COMMERCIAL 3000 OPS

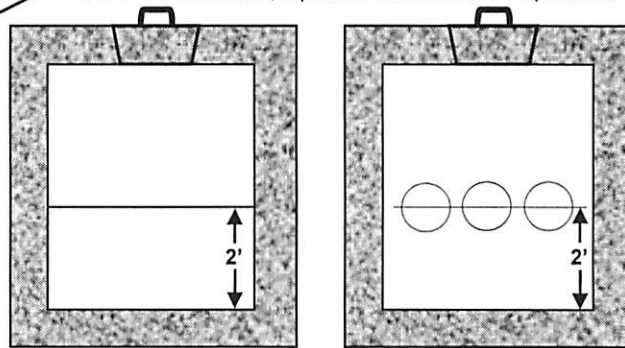
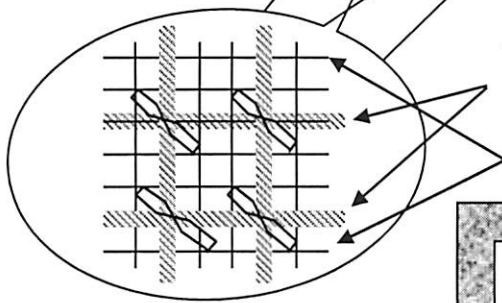
(Drawings Not to Scale)



### Detail of Reinforcement

1/2" grade 60 rebar tied in a 8" x 8" grid, top and bottom, 1/2 grade 60 rebar loops around sides every 8" inches

4" x 4" #4 wire fabric, top sides and bottom or equivalent



Critical Tank Dimensions				
Liquid Capacity	Inlet/Outlet I / O	Height(H)	Length x Width L x W	Excavation Size
3000	47" / 45"	74"	17'6" x 7'6"	19'x9'

### Notes

1. Concrete strength f'c 5000PSI@28 days. Density 150 PCF.
2. Cement, Portland Type II or III, ASTM C150-81
3. Admixtures, air & plasticizers per ASTM C233-82
4. Reinforcement per ASTM C1227-latest revision
5. Design Loading AASHTO HS20-40
6. Construction joints sealed with butyl rubber
7. Design conforms to 310 CMR 15.00, Mass Title V regs. for septic tanks